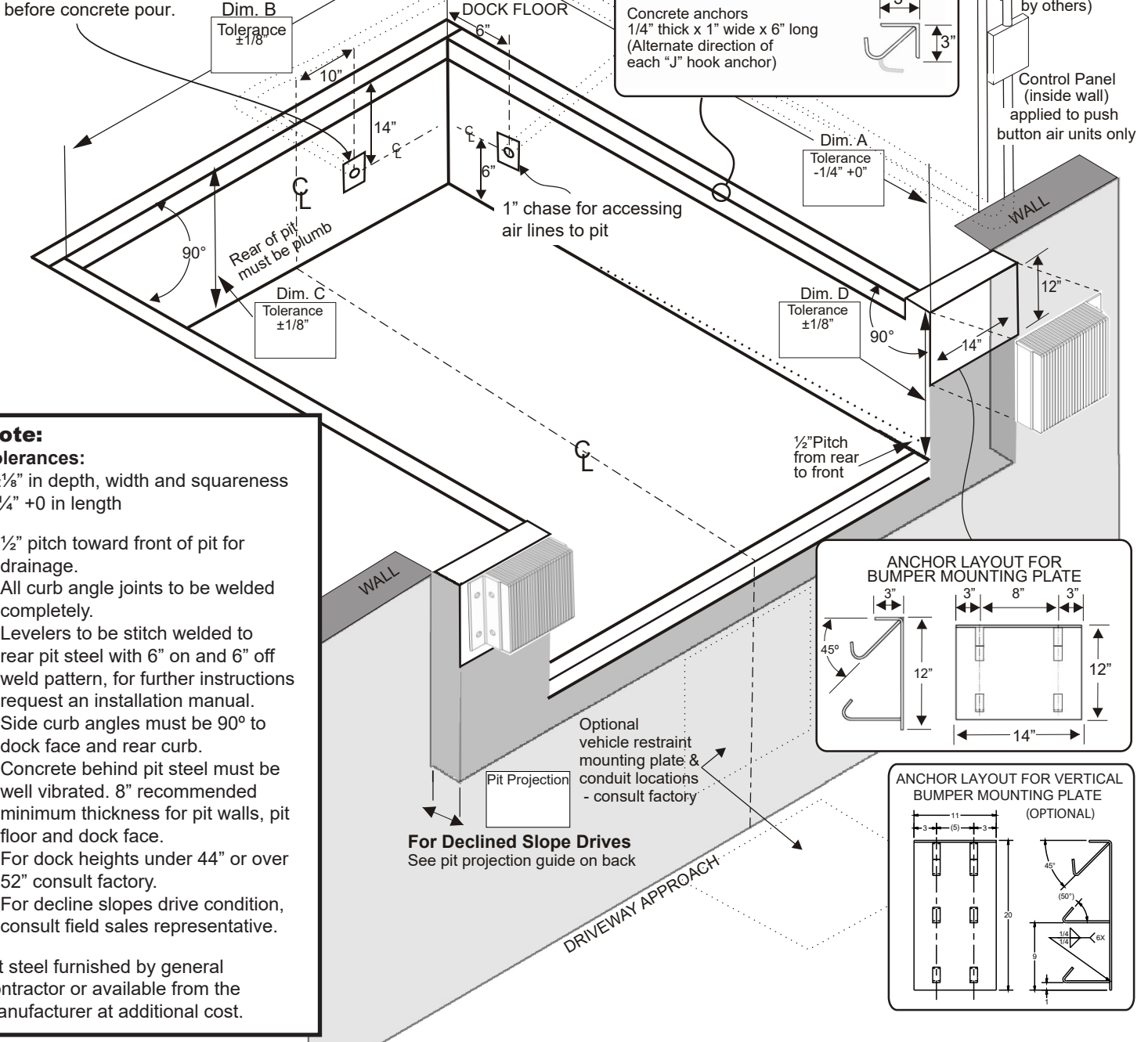


Pit Detail for CA Air Powered Dock Leveler

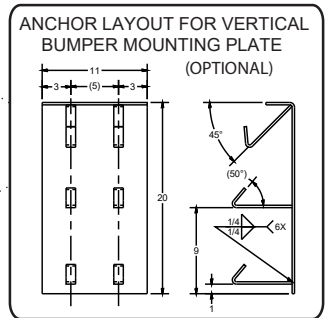
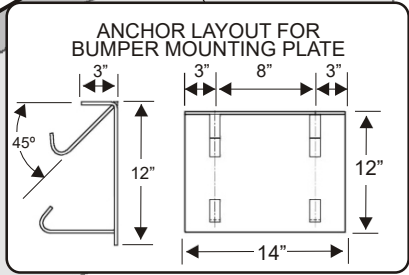
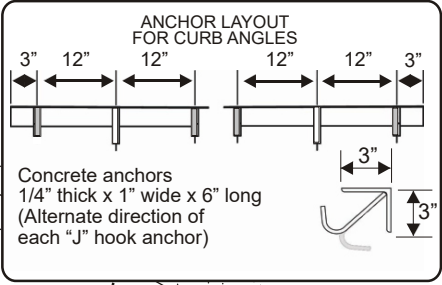
For levelers equipped with limit switch only:
Set 3/4" conduit and recessed weatherproof 4" x 4" junction box with gasketed cover (by others) before concrete pour.



Note:
Tolerances:
±1/8" in depth, width and squareness
-1/4" +0 in length

- 1/2" pitch toward front of pit for drainage.
- All curb angle joints to be welded completely.
- Levelers to be stitch welded to rear pit steel with 6" on and 6" off weld pattern, for further instructions request an installation manual.
- Side curb angles must be 90° to dock face and rear curb.
- Concrete behind pit steel must be well vibrated. 8" recommended minimum thickness for pit walls, pit floor and dock face.
- For dock heights under 44" or over 52" consult factory.
- For decline slopes drive condition, consult field sales representative.

Pit steel furnished by general contractor or available from the manufacturer at additional cost.



For Declined Slope Drives
See pit projection guide on back

Optional vehicle restraint mounting plate & conduit locations - consult factory

Air Supply drops required at each push button controller

Disconnect (if required, by others)

Control Panel (inside wall) applied to push button air units only

Customer: _____
 Job: _____
 Location: _____
 Qty: _____
 Model/Size: _____
 Capacity: _____
 Represented By: _____
 Sales Representative: _____

Certified For Construction

By: _____
 Date: _____
 Company: _____
 City & State: _____
 Voltage/Phase: _____
 Drawing#: _____

Pit dimensional tolerances are $\pm 1/8$ " depth, width and squareness. $-1/4$ " +0" in length.
 Poweramp/Systems, LLC assume no liability for deviations beyond this tolerance.

Dimensions below are for CA series air powered pit style levelers.								
	Contractors Bill of Material				Nominal Pit Dimensions			
	Curb Angles 1/4" x 3" x 3"			Mounting Plates 1/4" Thick	Dim. "A" Length	Dim. "B" Width	Dim. "C" Depth (rear)	Dim. "D" Depth (Front)
	Front (Qty 1)	Rear (Qty 1)	Side (Qty 2)	Bumper Plates (Qty 2)				
6' x 6'	74"	80"	60"	3" x 12" x 14"	63"	74"	19 1/2"	20"
6.5' x 6'	80"	86"	60"	3" x 12" x 14"	63"	80"	19 1/2"	20"
7' x 6'	85"	91"	60"	3" x 12" x 14"	63"	85"	19 1/2"	20"
6' x 8'	74"	80"	84"	3" x 12" x 14"	87"	74"	19 1/2"	20"
6.5' x 8'	80"	86"	84"	3" x 12" x 14"	87"	80"	19 1/2"	20"
7' x 8'	85"	91"	84"	3" x 12" x 14"	87"	85"	19 1/2"	20"
6' x 10'	74"	80"	108"	3" x 12" x 14"	111"	74"	19 1/2"	20"
6.5' x 10'	80"	86"	108"	3" x 12" x 14"	111"	80"	19 1/2"	20"
7' x 10'	85"	91"	108"	3" x 12" x 14"	111"	85"	19 1/2"	20"

Optional Bumper Plates - in lieu of above

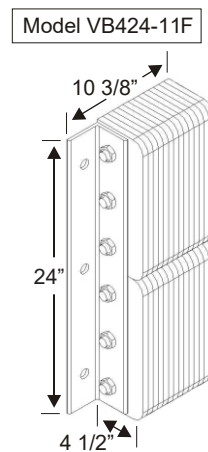
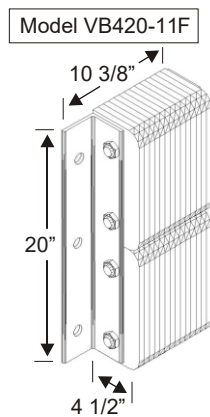
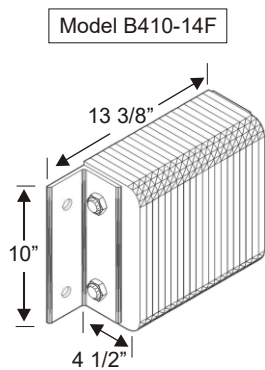
- 3" x 11" wide x 20" high (Qty 2)
- 3" x 11" wide x 24" high (Qty 2)
- Other Bumper Embed _____ (Qty 2)

Pit Projection Guide for Decline Slope Driveways

Percentage of Grade = $\frac{\text{Rise of Driveway}}{\text{Driveway Length}}$	% of Driveway Grade	0%	1%	2%	3%	4%	5%	6%	7%	8%	9%	10%
		Pit Projection *Excludes Bumper Projection	0"	3"	4"	5"	6"	7"	8"	9"	10"	11"

Note: Projection of pit may require modifications to seals and shelters.
 Coordinate with supplier if required.

Bumper Layout



Bumper Consideration

- 2 Model B410-14F laminated bumpers
Standard on CA
- Optional - 6" Projection
- Optional - Steel Face
- 2 Model VB420-11F laminated bumpers
- Optional - 6" Projection
- Optional - Steel Face
- 2 Model VB424-11F laminated bumpers
- Optional - 6" Projection
- Optional - Steel Face
- Other Bumper: _____

A continuing product improvement process is in effect at Systems, LLC. We reserve the right to make product changes without prior notice.

Poweramp • Division of Systems, LLC • W194 N11481 McCormick Dr. • Germantown, WI 53022
 Phone: (800) 643-5424 • Email: sales@poweramp.com • www.poweramp.com