

## WHEEL-BASED VEHICLE RESTRAINT

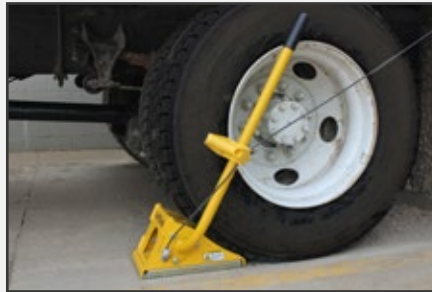


\* UniChock™ sample installation. Product subject to change.  
iDock Controls shown with optional dock light push button.

- ▶ Universal Wheel Chock with Light Communication System
- ▶ Audible Alerts to Ensure Safe Use and Storage
- ▶ Interior Messages for the Position of the Chock
- ▶ iDock® Alert with Interactive Message Display
- ▶ Option to Connect Online with myQ® Enterprise
- ▶ Strong Grip to Limit Sliding
- ▶ Aluminum for Strength and Light Weight
- ▶ Zinc-Plated Steel Teeth and Storage Bracket
- ▶ Replaceable Teeth for Overall Longevity
- ▶ Made in the USA



Easily stored and away from damage or debris.



Secure grip to the ground with audible indicators if in unsafe position during loading.



UniChock includes light communication and can be integrated with other dock equipment.

## VEHICLE RESTRAINT SYSTEM

The UniChock™ is a wheel-based trailer restraint with advanced light communication and available as a standalone unit or integrated with other dock equipment. Universally effective in most conditions, the unit helps prevent unexpected trailer departure or movement from the loading dock during the loading process.

## OPERATION

Once a trailer is fully backed and parked in position against the dock bumpers, the yellow UniChock is removed from the storage bracket and placed under the front of one of the trailer's back tires. This will sound an audible indicator and display a message on the iDock Controller that the unit is in a safe position. The dock attendant can then proceed to open the door and deploy the leveler.

After loading is complete, the dock attendant stores the leveler and closes the overhead door, either of which must have an installed switch interlocked with the restraint. This will then sound and display indications to return the UniChock to the storage bracket.

## SAFETY FEATURES

- Damaged traction teeth can be replaced as necessary to maintain a stronger grip.
- Automatic light sequencing with interior/exterior red/green lights always in opposition.
- Exterior and interior audible alarms if the UniChock is not in a safe position during loading.
- Full communication package with lights, signs and control panel with universal signage pictures for additional communication safety.
- Optional integrated iDock Controls for safe leveler interlock.

## LIGHT COMMUNICATION

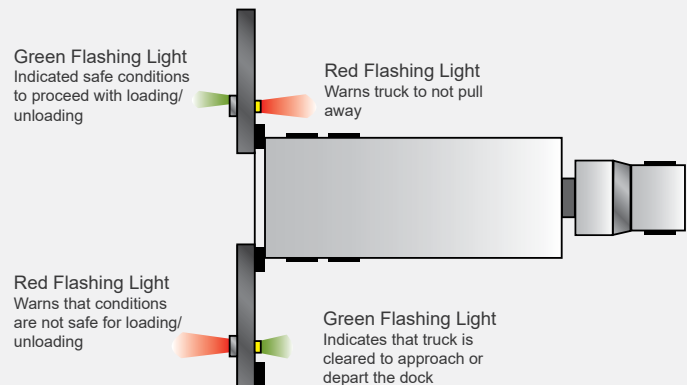
The UniChock uses advanced iDock Controls with an LED 3-color light communication system. As a truck approaches, the exterior light is green and the interior light is red. Once a trailer is parked at the dock and the UniChock is correctly positioned under the trailer's tire, the exterior light automatically changes to red and interior light to green. If the chock is moved to an unsafe position during loading, an audible alarm will sound and the interior light will change to alternating red and amber until the restraint is back in the correct position.

When loading is complete, the dock attendant stores the leveler and closes the door, either of which automatically changes the interior light to amber and the exterior light to alternating red and green until the unit is placed back on the storage bracket, which changes the exterior light to green and interior light to red.

## CONSTRUCTION & ELECTRICAL

The restraint unit is durable and light weight aluminum with a powder coat finish. The traction teeth and storage bracket are zinc-plated steel. Wired sensors are installed in the restraint unit and the storage bracket. The control panel is NEMA 4X with all components, connections and wiring UL listed and/or recognized. Panels are built in-house in a UL-approved control panel shop.

UniChock Common Options	
▶	Integrated control panel
▶	Custom interlock sequence with leveler or door
▶	3-Digit passcode for bypass mode
▶	Connect online to myQ® Enterprise
▶	Bracket extension for alternate storage positions



A Division of Systems, LLC

W194 N11481 McCormick Drive • Germantown, WI 53022  
Phone: 1.800.643.5424 • Email: sales@poweramp.com

[www.poweramp.com](http://www.poweramp.com)

Connect online with

